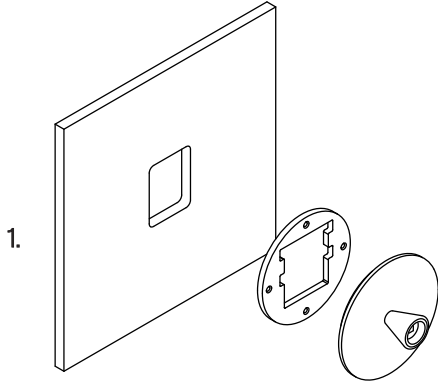




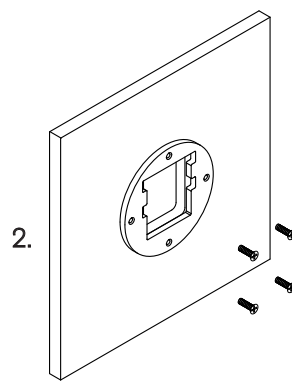
WALL LIGHT INSTALLATION

Installation Instructions



Unscrew the grub screw to separate the screw plate from the circular face plate.

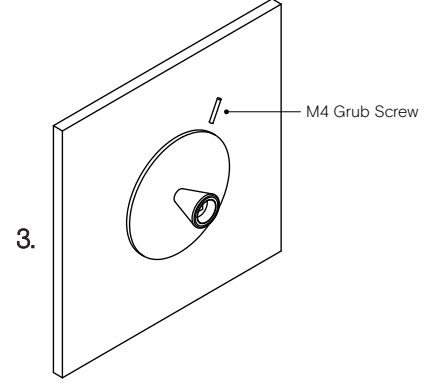
Prep the wall with a hole to match the cutout in the screw plate.



Install the screw plate to the wall using appropriate fasteners for the wall substrate.

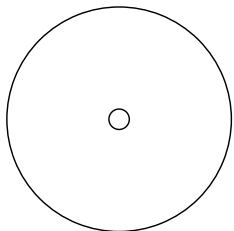
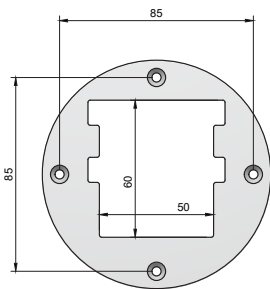
Secure the transformer into the wall cavity and feed the cable through the hole into the room. Connect the single electrified cable to the transformer.

*The transformer needs to be accessible for maintenance purposes.



Fit the circular wall plate over the mounting plate and secure with the supplied M4 grub screw at the top of the plate.

Wall Plate Dimensions



Ø110mm

9



Ø95