



CORAL

RING PENDANT (20 PIECES)

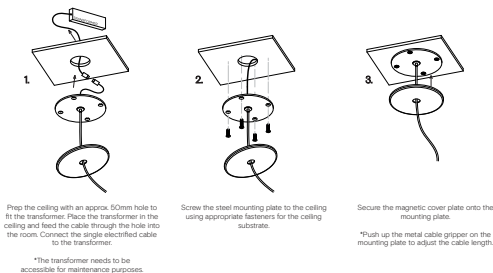
Designed by Oliver Höglund & Ryan Roberts



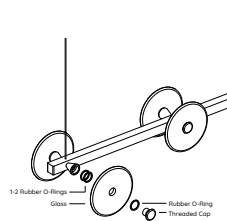
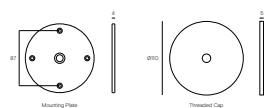
TECHNICAL DATA

Application	Interior Use Only	Input Power	100 - 240VAC Power supplied in one suspension cable
Glass Colour	Frosted / Clear	Output Power Standard	80V DC (350mA Constant Current) Supplied with Remote Driver
Round Bar Finish	Brass Finish / Matte Black / Matte White / Steel Finish / Bronze	Dedicated LED	20 x 1W 350mA (Standard) Lifespan - 60,000+ Hours CRI>90
Ceiling Mount	Matte White / Matte Black	Colour Temperature	2700K / 3000K (standard) / 4000K
Suspension	Steel Cable / Black Cable / White Cable	Dimming	Yes - TRIAC / Phase Dimming (Standard) Dimmable DALI (additional cost)
Suspension Length	1500mm (Or custom length)	Warranty	24 Months / 2 Years
Glass Dimensions	Coral Glass Width: (x10) 120mm & (x10) 150mm	Certification	AU/NZ AS/NZS 60598.1, 60598.2.1 EU EN 60598.1, 60598.2.1 US/CAN ETL/UL 1598, CSA C22.2#250.0
Ring Diameter	800mm		
Weight	15kg		

MOUNTING



Dimensions



To install the glass piece, hold the glass against the LED housing and thread the 30mm threaded cap into the LED housing.

*Ensure the rubber o-rings are installed in the correct position, 1 behind the glass, and 1 in-front on the glass. If the glass is not held firmly when the threaded cap is fully screwed in, install an extra o-ring.

