



CORAL

RING PENDANT (20 PIECES)

Designed and Handmade by Oliver Höglund & Ryan Roberts

Adorn your space with the remarkable Coral Ring 20 Piece pendant light. The circular ring base, available in a brass finish, matte black, matte white, and medium bronze finishes provides a striking canvas for the arrangement of 20 individual hand-blown glass discs. The interplay of varied glass sizes imparts a distinctive touch of opulence to this centerpiece, making it an ideal choice for hanging above dining tables, kitchen islands, or within an office space. Choose from a frosted or clear finish and set the mood of your space with a choice of warm, warm white, or white LED temperatures. Meticulously hand-blown using premium Swedish clear glass, each disc carries the distinctiveness of SOKTAS Glass designs, promising an unparalleled and personalised lighting masterpiece that adds both elegance and character to your space.

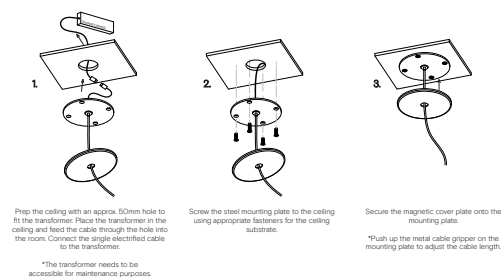
Hand Made in Currumbin, Australia.



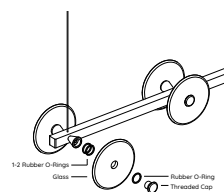
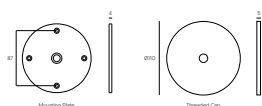
TECHNICAL DATA

Application	Interior Use Only	Input Power	100 - 240VAC
Glass Colour	Frosted / Clear	Output Power Standard	80V DC (350mA Constant Current) Supplied with Remote Driver
Round Bar Finish	Brass Finish / Matte Black / Matte White / Steel Finish / Medium Bronze Powdercoat	Dedicated LED	20 x 1W 350mA (Standard) Lifespan - 60,000+ Hours CRI>90
Ceiling Mount	Matte White / Matte Black	Colour Temperature	2700K / 3000K (standard) / 4000K
Suspension	Steel Cable / Black Cable / White Cable	Dimming	Yes - TRIAC / Phase Dimming (Standard) Dimmable DALI (additional cost)
Suspension Length	1500mm (Or custom length)	Warranty	24 Months / 2 Years
Glass Dimensions	Coral Glass Width: (x10) 140mm & (x10) 170mm	Certification	AU/NZ AS/NZS 60598.1, 60598.2.1 EU EN 60598.1, 60598.2.1 US/CAN ETL/UL 1598, CSA C22.2#250.0
Ring Diameter	800mm		
Weight	15kg		

MOUNTING



Dimensions



To install the glass piece, hold the glass against the LED housing and thread the 30mm threaded cap into the LED housing.

*Ensure the rubber o-rings are installed in the correct position, 1 behind the glass, and 1 in-front on the glass. If the glass is not held firmly when the threaded cap is fully screwed in, install an extra o-ring.

