



CORAL

RING PENDANT (10 PIECES)

Designed and Handmade by Oliver Höglund & Ryan Roberts

Adorn your space with the remarkable Coral Ring 10 Pieces pendant light. The circular ring base, available in a brass finish, matte black, matte white, and medium bronze finishes provides a striking canvas for the arrangement of ten individual hand-blown glass discs. This ring of modern art adds a distinctive touch of opulence to any space, particularly suited for hanging above dining tables, kitchen islands, or within an office space. Choose from a frosted or clear finish and set the mood of your space with a choice of warm, warm white, or white LED temperatures. Meticulously hand-blown using premium Swedish clear glass, each disc carries the distinctiveness of SOKTAS Glass designs, promising an unparalleled and personalised lighting masterpiece that adds both elegance and character to your space.

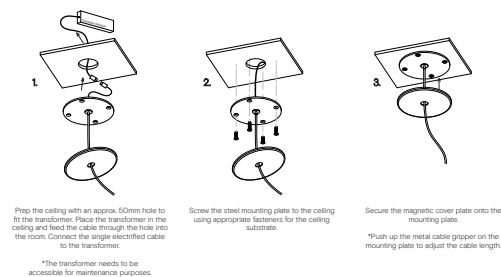
Hand Made in Currumbin, Australia.



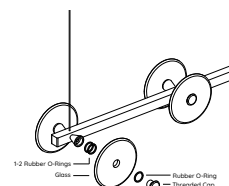
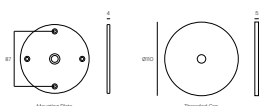
TECHNICAL DATA

Application	Interior Use Only	Input Power	100 - 240VAC
Glass Colour	Frosted / Clear	Output Power Standard	40V DC (350mA Constant Current) Supplied with Remote Driver
Round Bar Finish	Brass Finish / Matte Black / Matte White / Steel Finish / Medium Bronze Powdercoat	Dedicated LED	10 x 1W 350mA (Standard) Lifespan - 60,000+ Hours CRI>90
Cover Cap Finish:	Brass Finish / Matte Black / Matte White / Steel Finish / Medium Bronze Powdercoat	Colour Temperature	2700K / 3000K (standard) / 4000K
Ceiling Mount	Matte White / Matte Black	Dimming	Yes - TRIAC / Phase Dimming (Standard) Dimmable DALI (additional cost)
Suspension	White Cable / Steel Cable / Black Cable	Warranty	24 Months / 2 Years
Suspension Length	1500mm (Or custom length)	Certification	AU/NZ AS/NZS 60598.1, 60598.2.1 EU EN 60598.1, 60598.2.1 US/CAN ETL/UL 1598, CSA C22.2#250.0
Glass Dimensions	Coral Glass (x10) Width: 170mm		
Ring Diameter	800mm		
Weight	8kg		

MOUNTING



Dimensions



To install the glass piece, hold the glass against the LED housing and thread the 30mm threaded cap into the LED housing.

*Ensure the rubber o-rings are installed in the correct position, 1 behind the glass, and 1 in-front on the glass. If the glass is not held firmly when the threaded cap is fully screwed in, install an extra o-ring.

