



# CORAL

## LINEAR ROD PENDANT (x4)

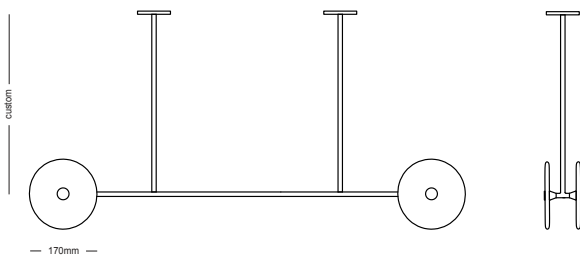
Designed by Oliver Höglund & Ryan Roberts



### TECHNICAL DATA

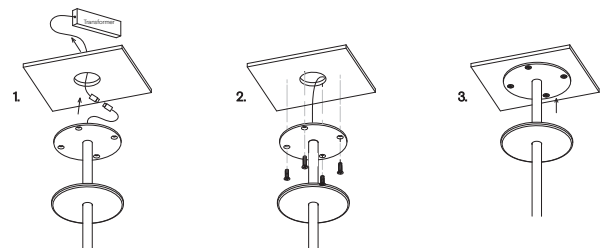
Application	Interior & Outdoor Use (IP44)	Input Power	100 - 240VAC
Glass Colour	Clear / Frosted	Output Voltage (Standard)	12V DC Driver (350mA Constant Current) Supplied with Remote Driver
Rod Suspensions	Matte Black / Matte White / Brass Finish Steel Finish / Bronze	Dedicated LED	4 x 1W - 350mA (Standard) 4 x 2W - 350mA (additional cost) Lifespan - 60,000+ Hours CRI>90
Dimensions	Glass Diameter: 170mm Linear Rod: 1000mm	Colour Temperature	2700K / 3000K (Standard) / 4000K
Measurement between vertical rods	500mm	Dimming	Yes - Dimmable TRIAC/Phase (Standard) Dimmable DALI (additional cost) Please contact for alternative dimming
Certification	AU/NZ AS/NZS 60598.1, 60598.2.1 EU EN 60598.1, 60598.2.1 US/CAN ETL/UL 1598, CSA C22.2#250.0	Warranty	24 Months / 2 Years

### DIMENSIONS



### MOUNTING

#### Installation Instructions



1. Prep the ceiling with an approx. 50mm hole to fit the transformer. Place the transformer in the ceiling and feed the cable through the hole into the room. Connect the single electrified cable to the transformer.

2. Screw the steel mounting plate to the ceiling using appropriate fasteners for the ceiling substrate.

3. Secure the magnetic cover plate onto the mounting plate.

\*The transformer needs to be accessible for maintenance purposes.