



# CORAL

## LINEAR BAR PENDANT

Designed and Handmade by Oliver Höglund & Ryan Roberts

Add a feature piece to your space with the Coral Linear Bar pendant light, a beautiful modern centrepiece perfect for dining tables, kitchen islands and elegant office spaces. Featuring ten unique glass-blown discs suspended on a rod available in a selection of finishes including brass finish, steel finish, matte black, matte white, or medium bronze powder coating. Choose from a frosted or clear finish and set the mood of your space with a choice of warm, warm white, or white LED temperatures. Meticulously hand-blown using premium Swedish clear glass, each disc carries the distinctiveness of SOKTAS Glass designs, promising an unparalleled and personalised lighting masterpiece that adds both elegance and character to your space.

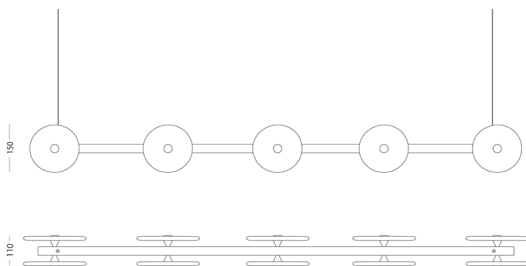
Hand Made in Currumbin, Australia.



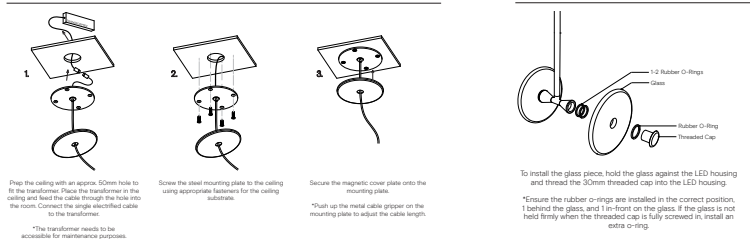
### TECHNICAL DATA

Application	Interior Use Only	Input Power	100 - 240VAC
Glass Colour	Frosted / Clear	Output Power Standard	17 - 29V DC (350mA Constant Current) Supplied with Remote Driver
Linear Bar Finish	Matte Black / Matte White / Steel Finish / Brass Finish / Medium Bronze Powdercoat	Dedicated LED	10 x 1W - 350mA (Standard) 10 x 2W - 350mA (additional cost) Lifespan - 60,000+ Hours CRI>90
Ceiling Mount	Matte White / Matte Black	Colour Temperature	2700K / 3000K (standard) / 4000K
Suspension	Steel Cable / Black Cable / White Cable	Dimming	Yes - TRIAC / Phase Dimming (Standard) DALI Dimmable (additional cost) Please contact for alternative dimming
Suspension Length	1500mm	Weight	6.0kg
Dimensions	Coral Glass (x10 ) Width: 150mm  Linear Bar Length: 1500mm Total width - 110mm - 120mm	Warranty	24 Months / 2 Years
Measurement between ceiling mounts	- 1330mm	Certification	CE / AS/NZS - 60598.2.1

### DIMENSIONS



### MOUNTING



### Dimensions

