



CORAL DUO ROD OFF-CENTERED WALL LIGHT

Designed and Handmade by Oliver Höglund & Ryan Roberts

Embellish your walls with the Coral Duo Rod wall light and add a modern contemporary feature ideal for kitchens, bedrooms, bathrooms and entryways. This statement piece features three hand-blown glass discs available in both clear and frosted finishes. Tailor it to your preferences by selecting a wall plate finish of brass finish, matte black, matte white, medium bronze or steel finish and set the mood of your space with a choice of warm, warm white, or white LED temperatures. Meticulously hand-blown using premium Swedish clear glass, each disc carries the distinctiveness of SOKTAS Glass designs, promising an unparalleled and personalised lighting masterpiece that adds both elegance and character to your space.

Hand Made in Currumbin, Australia.

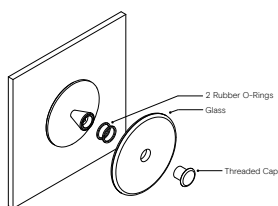


TECHNICAL DATA

Application	Interior & Outdoor Use	Input Power	100-240V AC
Glass	Frosted / Clear	Output Power	8V DC Driver (350mA Constant Current) Supplied with Remote Driver
Wall Mount Finish	Matte Black / Matte White / Brass Finish / Steel Finish / Medium Bronze Powdercoat	Dedicated LED	3 x 1W - (Standard) / 3 x 2W (additional cost) Lifespan - 60,000+ Hours CRI>90
Glass Dimensions	170mm Wall Mount: 110 x 15mm Protrudes: 90mm	Colour Temperature	2700K / 3000K (Standard) / 4000K
Overall Length	340mm	Dimming	TRIAC/Phase Dimmable (Standard) DALI (additional cost) Please contact for alternative dimming options
IP Rating	IP44	Mounting	Integral Wall Bracket
Warranty	24 Months / 2 Years	Certification	AU/NZ AS/NZS 60598.1, 60598.2.1 EU EN 60598.1, 60598.2.1 US/CAN ETL/UL 1598, CSA C22.2#250.0

GLASS INSTALLATION

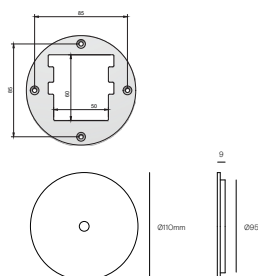
Glass Installation



To install the glass piece, hold the glass against the LED housing and thread the 30mm threaded cap into the LED housing.

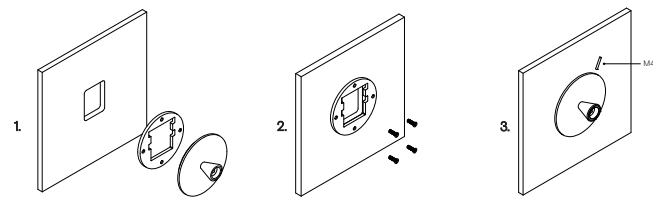
*Ensure the rubber o-ring(s) are installed in the correct position. If the glass is not held firmly when the threaded cap is fully screwed in, install the second o-ring behind the glass.

Wall Plate Dimensions



MOUNTING

Installation Instructions



1. Unscrew the grub screw to separate the screw plate from the circular face plate.

Prep the wall with a hole to match the cutout in the screw plate.

2. Install the screw plate to the wall using appropriate fasteners for the wall substrate.

Secure the transformer into the wall cavity and feed the cable through the hole into the room. Connect the single electrified cable to the transformer.

3. Fit the circular wall plate over the screw plate and secure with the supplied M4 screw at the top of the plate.

*The transformer needs to be accessible for maintenance purposes.